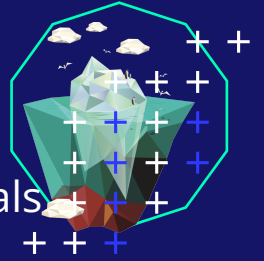


++ ++

Basin digitization for insurance, risk analytics & environmental engineering

All-things-continental-freshwater data for risk managers and environmental engineering professionals



Provide continental freshwater data when needed

Integrates smoothly within insurance existing processes

Integrating data to risk management existing systems is made as smooth as possible thanks to our well-documented API that comes with examples.



A highly reliable API

Withdraw the most up-to-date information, if need be in real-time.

BWI takes privacy and security matters seriously

BWI makes sure information security best practices are implemented so the service insurance & risk management operators are paying for brings additional value to their business.

++ ++

Bring hydrological expertise to help take into account the effects of climate change

Discrete hydrological measures

Water level snapshots at watershed level

Risk index maps for parametric insurance

++ ++

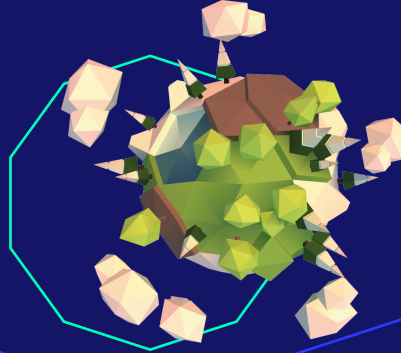


Water-related data for insurance, risk management and analytics

Broaden the scope of your GeoDataHub

Historical continental freshwater data

Historical data is available to broaden the depth of insurance GeoDataHub and reinforce insurance parametric models.



Near real-time hydrological data

Near real-time data means BWI ships the data to risk management companies as soon as it's available, at all levels: local, regional, national.

Water level and water discharge predictions

Predictions are available so insurance & risk management companies may build their alerting systems and optimization processes on top of BWI's API.

Smooth integration

Subscribe online

Create an account online, select your BWI plan and start drawing value from the service in a matter of minutes.

Scale on-demand

Adapt the subscription to insurance operations.

Unlimited support

Your named customer success manager at BWI is always here to pick up the phone and answer your questions.

More info

